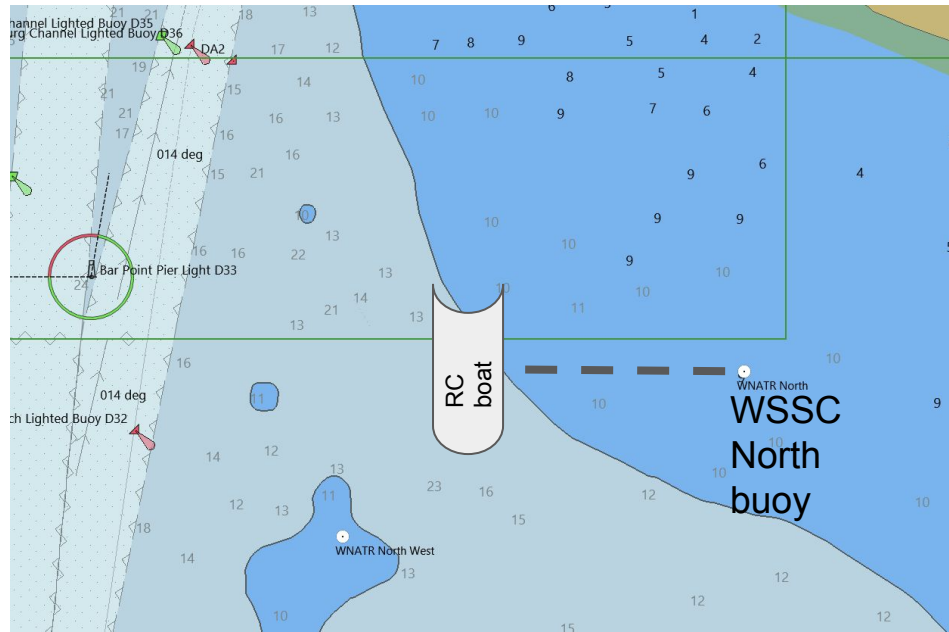


The Start

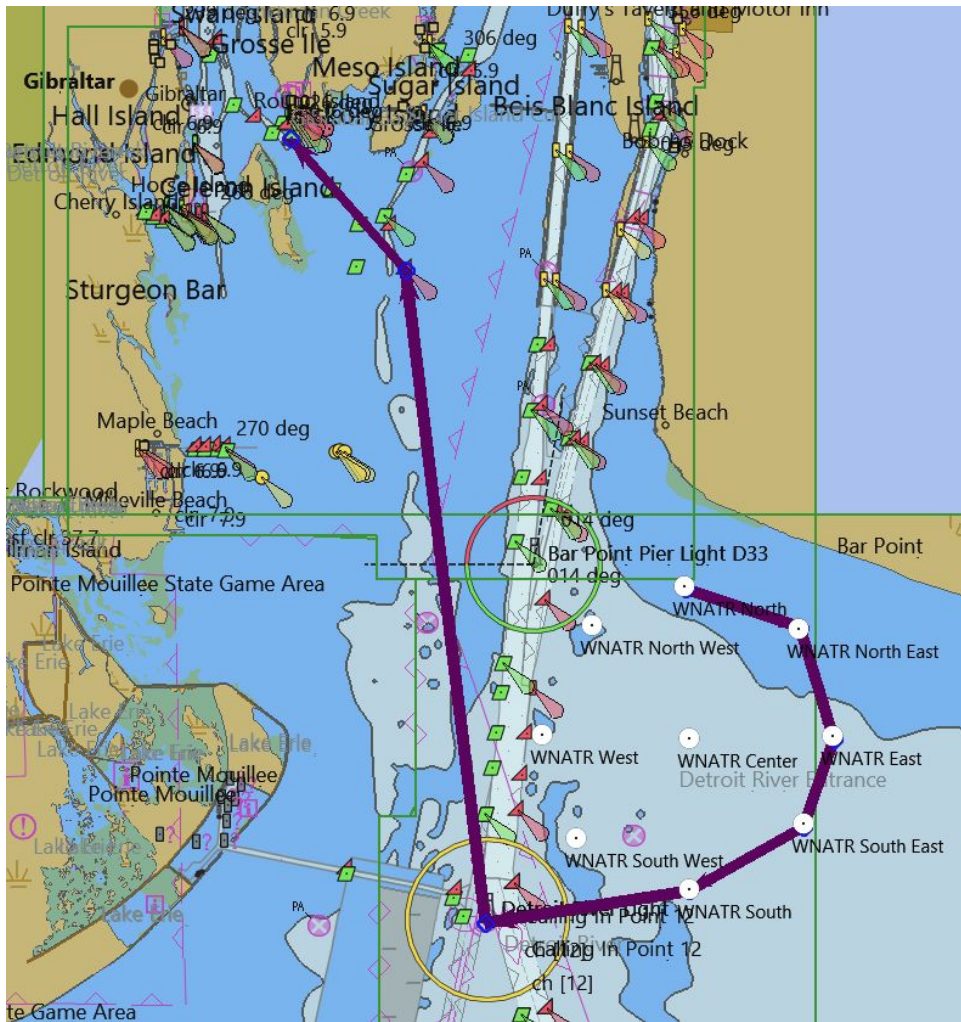


The starting line is between the R/C boat the WSSC North buoy

The Finish



The finish line is an imaginary line straight out of the FYC east basin through the green entrance buoy.



The Course:

- From the Start, proceed to WSSC North East mark, round to starboard
- Proceed to WSSC East mark, round to starboard
- Proceed to WSSC South East mark, round to starboard
- Proceed to WSSC South mark, round to starboard
- Proceed to Detroit Light, round to starboard
- Proceed to R"2" FI R 4s, round to Port, fire up your auxiliary and put your sailing gear away so you can head to the FYC bar as soon as you hit the dock!
- Proceed to the finish line

Approximate Mark Locations

- WSSC N 42° 02.2571' N 083° 06.7124' W
- WSSC NE 42° 01.9817' N 083° 05.7005' W
- WSSC E 42° 01.2642' N 083° 05.3938' W
- WSSC SE 42° 00.5449' N 083° 05.7247' W
- WSSC S 42° 00.2524' N 083° 06.6699' W
- Detroit Light 42° 00.0278' N 083° 08.4938' W
- R"2" FI R 4s 42° 04.3555' N 083° 09.2071' W
- FYC east basin green 42° 05.2031' N 083° 10.2874' W